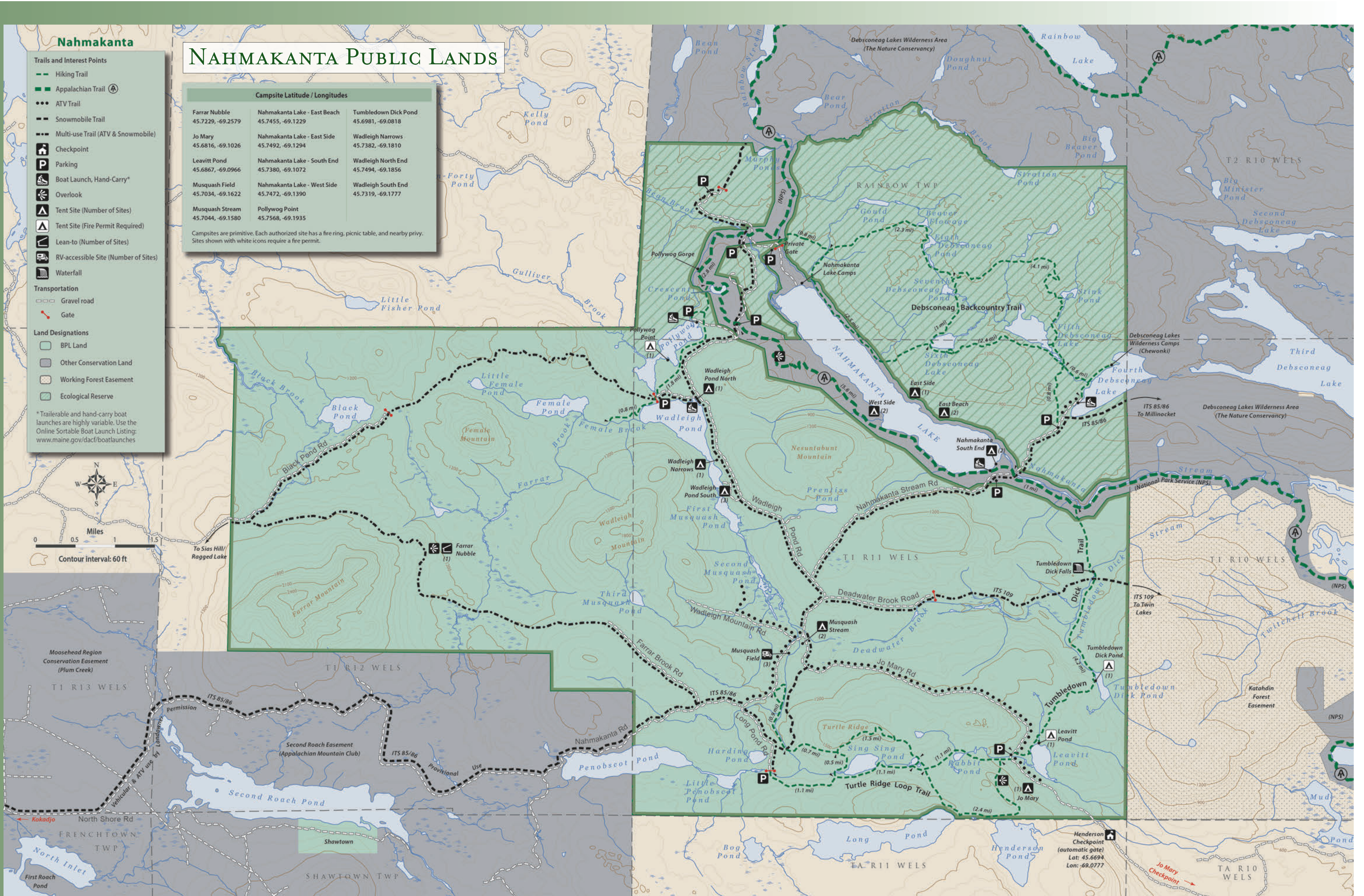


Farrar Nubble Shelter



HIKING TRAILS

Appalachian Trail (moderate at Nahmakanta) has more than 9 miles that crosses the Nahmakanta Public Lands. If you hike south from the AT road crossing east of Pollywog Pond, about 1.2 miles (one way) you will find stunning views from ledges on Nesuntabunt Mountain.

Turtle Ridge Loop Trail (options from 6.6 miles to 11 miles between the west trailhead on the Long Pond Road and east trailhead on Jo-Mary Road) crosses densely wooded terrain, passing several ponds and open ledges that periodically offer panoramic views of surrounding mountains.

Debsconeag Backcountry Trail (loops of from 7.4 miles to 13 miles roundtrip—moderate): East trailhead near west end of Fourth Debsconeag Lake at ‘new’ parking lot; west trailhead north of Nahmakanta Lake near Rainbow Stream (no foot-

bridge). The figure-eight trail layout provides several options to explore pristine ponds nestled throughout the State Ecological Reserve.

Tumbledown Dick Trail (4.6 miles one-way—moderate) links the AT with Leavitt Pond and the Turtle Ridge trail system, providing access to scenic falls and to campsites at Tumbledown Dick and Leavitt Ponds.

MOTORIZED TRAILS

ITS 85/86, a major snowmobile trail linking Greenville and Millinocket (both snowmobiling hubs), provides trail touring and access for ice fishing on Nahmakanta Lake. (The Bureau does not encourage riding on lakes because of potential hazards.) Unplowed roads are open to snowmobiling as well (plowing changes year to year based on logging needs—get up-to-date information from BPL’s Off Road Vehicle Program).

ATV riders can explore shared-use roads at Nahmakanta (open to ATVs, pedestrians, bicycles, and equestrians). There are also multi-use trails open to ATV riders and snowmobilers. The trail to Farrar Mountain provides scenic views north toward Mount Katahdin.

Access to Nahmakanta across private roads is subject to landowner permission. Please follow posted signs.

For maps and additional information about ATving and Snowmobiling contact the Bureau’s Off-road Recreational Vehicle Office at (207) 287-4957. Within Maine Only: 1-800-462-1019.

This map shows selected access roads. For complete road information use another map, such as *The Maine Atlas and Gazetteer*.